

**Feb. & March
2020**



Closings

Saturday, 2/8 LJCL Closed

Monday, 2/17 LJCL & EPL
Closed for President's Day

Saturday, 3/7 LJCL Closed

Programs

AARP Taxaide @ 9am-1pm
Friday's

Thursday, 2/20 @ 12pm Medi-
care A,B,C,&D presented by
Dawson Dyess, Medicare Ana-
lysts

Saturday, 3/28 @10am JCGHO
monthly meeting

Children's Programs

Laurel-Jones County
Library:
Tuesdays @ 10 a.m.

Ellisville Public Library:
Thursdays @ 10 a.m.

FY 2018-2019 Statistics

Program Attendance.....7,095

Items Checked-out.....100,079

Computer/Wi-Fi Usage....21,130

Library Visits.....74,113

**Laurel-Jones
County**
LIBRARY
SYSTEM, INC.

THE INSIDER

LAUREL-JONES COUNTY LIBRARY
&

LAUREL POLICE DEPARTMENT

IN PARTNERSHIP WITH
B-95 WBBN BREAKFAST CLUB

PRESENT

COFFEE



COCOA WITH A COP

TUESDAY, 02/18/20

9:30 A.M. - 11:30 P.M.

**PLEASE JOIN US FOR A VERY SPECIAL STORYTIME
FEATURING THE LAUREL POLICE DEPARTMENT & GREY
MANNING OF THE B95 BREAKFAST CLUB**

Reading "Garden" Coming Soon to Ellisville!

The Ellisville Public Library has been in its current location for 11 years. During that time, the library has benefited from several changes, including a new courtyard with gazebo, light-up signage, and a more patron-friendly floor plan. Now, another exciting change is underway. Soon, the Ellisville children's area will be transformed into a reading garden! There will be a reading house (the perfect place to snuggle into a beanbag and read), a grassy hill covered with flowers, and even a few trees. Please stop by and see our progress. We can't wait to share this beautiful new space with you and your family!



-Joanna Ashley, Ellisville Branch Manager



Storytime=Kindergarten Readiness

As we begin a new year with many storytimes ahead, we are looking forward to approaching our story hours with skills to help children prepare for kindergarten. We will focus on including practices such as scissor, glue, and tracing capabilities. Adding these practices into the craft will also help each child form an understanding of following instructions, which will later help in their years of learning. We are excited for another wonderful year of storytime, and we can't wait to make these special library memories with your child!

-Kandice Evans, Children's Services



Laurel-Jones County Library System, Inc. Schedule of Events

Tuesday, 2/4 @ 10:00 a.m. (LJCL) StoryTime PlayDate
***My Spring Robin*, presented by Simply Southern Garden Club**

Thursday, 2/6 @ 10:00 a.m. (EPL) Imagination Station
***Love Is*, presented by staff**

**Tuesday, 2/11 @ 10:00 a.m. (LJCL) StoryTime PlayDate/
Kindergardeners- *The Secret Life of Squirrels: A Love Story*,**
presented by Park Place Garden Club

**Thursday, 2/13 @ 10:00 a.m. (EPL) Imagination Station-Valentine's
Party, *Little Ted's Big Heart* presented by Ellisville Garden Club**

**Tuesday, 2/18 @ 9:30 Coffee with a Cop
@ 10:00 a.m. (LJCL) StoryTime PlayDate**
***XO. Ox: A Love Story* presented by Grey Manning and Michelle
Anderson-Jones**

Thursday, 2/20 @ 10:00 a.m. (EPL) Imagination Station
***Should I Share My Ice Cream?*, presented by staff**

Tuesday, 2/25 @ 10:00 a.m. (LJCL) StoryTime PlayDate
***We're All Wonders* presented by Crystal Phillips, The Social Club, Inc.**

Thursday, 2/27 @ 10:00 a.m. (EPL) Imagination Station
***Brown Bear, Brown Bear, What Do You See?*, presented by staff**



Laurel-Jones County Library System, Inc. Schedule of Events

Tuesday, 3/3 (LJCL) Storytime PlayDate
TBA, presented by Garden Club

Thursday, 3/5 (EPL) Imagination Station
***What Pet Should I Get?*, presented by staff**

Tuesday, 3/10 (LJCL) StoryTime PlayDate/Kindergardeners
TBA, presented by Park Place Garden Club

Thursday, 3/12 (EPL) Imagination Station
***How the Crayons Saved the Rainbow*, presented by staff**

Tuesday, 3/17 (LJCL) StoryTime PlayDate
***How To Catch a Leprechaun*, presented by staff**

Thursday, 3/19 (EPL) Imagination Station
***Pete the Cat and His Four Groovy Buttons*, presented by staff**

Tuesday, 3/24 (LJCL) StoryTime PlayDate
***Little Blue Truck's Springtime*, presented by staff**

Thursday, 3/26 (EPL) Imagination Station
TBA, presented by Ellisville Garden Club

Thursday, 3/31 (EPL) Imagination Station
***I Broke My Trunk*, presented by staff**

All story times begin @ 10:00 a.m.

Reading Horizons Tutoring Program Update

We are pleased to announce both our children's and adult literacy stations are back up and running! We have several slots available. If you know of a student or adult who is struggling with reading, please refer them to us. We can help! We offer online and one-on-one tutoring sessions free of charge. This program was originally funded by an LSTA grant with matching funds provided both the Friends of Jones County Public Libraries and Friends of the Ellisville Public Library. Funding for this very important service ran out late last year. The library system would like to thank Jones County Board of Supervisors, and the Laurel City Council for increasing our budget to allow for us to renew our license to continue assisting our community. We would also like to thank our local Laurel Walmart and it's manager Mannie Martinez for a \$1,000 donation for the program, as well as Friends of the Jones County Public Library for a pledge to sponsor three children's seats. If you have any questions about the program, please see Michelle Jones or Kandice Evans. Either of them will be happy to assist you.

-Michelle Anderson-Jones
Public Relations & Programming Manager



Genealogy - Tips to Archive Newspaper Clippings

What is one thing genealogy researchers seem to have a lot of? **Newspaper clippings**. Here are 5 steps you can use at home to archive those newspaper clippings.

1. Digitize the newspaper clipping. This can be done by scanning the article & saving the scan to a computer, thumb drive or your backup hard drive. Be sure you record the source citation of each clipping. If you must write on the clipping, write on it with an archival safe instrument.
2. Purchase archival safe sleeves to store the clippings.
3. Only put one clipping per archival safe sleeve. Stuffing the sleeve with multiple newspaper clippings could damage them. Storing newspaper clippings, in sleeves, will insure that they don't touch any other documents.
4. Make copies of the original preserved newspaper clipping for use in your genealogy research. Be sure to store your original documents in a cool, dry, dark place.
5. Do not laminate newspaper clippings, or any type of genealogical document. Laminating sheets contain chemicals that can leech into the documents and destroy them over time. Lamination cannot be reversed.

If you need assistance with your genealogy research, please feel free to contact me at the Laurel-Jones County Library, 530 Commerce Street, Laurel MS, 601-428-4313, ext 111, or email me at geneal@laurel.lib.ms.us

-Susan Blakeney, Genealogist
Laurel-Jones County Library System, Inc.

Laurel-Jones County

LIBRARY SYSTEM, INC.

Laurel-Jones County Library System, Inc.

Laurel-Jones County Library (LJCL)
 530 Commerce St.
 Laurel, MS .39437
 Ph: 601-428-4313
 Fax: 601-428-0597

Genealogy Dept.
 Thursday 1:00pm - 4:45pm
 Friday 9:00am - 4:45pm (closed 12-1)
 Saturday 10:00 am - 2:00 pm (closed the 3rd Saturday of each month)

Ellisville Public Library (EPL)
 201 Poplar St.
 Ellisville, MS 39437
 Ph: 601-477-9271
 Fax: 601-477-3004



Call for hours of operation or visit www.laurel.lib.ms.us



LJCLS
BOOKWORMS

COME JOIN
OUR CLUB!

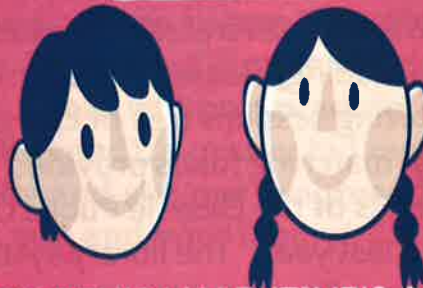
*We meet the second Tuesday
of each month.*

*February - Dispatches from
Pluto*

March - A Man Called Ove

LAUREL - 12:00 P.M. - 1:00 P.M.
 ELLISVILLE 5:00 P.M. - 5:50P.M.

HAPPY VALENTINE'S DAY!



CHILDREN'S VALENTINE'S PARTY
SCHEDULE

LAUREL - 02/11 @ 10:00 a.m. sponsored by Park
Place Garden Club

ELLISVILLE - 02/13 @ 10:00 a.m. sponsored by
Ellisville Garden Club



LAUREL-JONES COUNTY LIBRARY
INVITES YOU

TO LEARN ABOUT THE SOCIAL CLUB, INC.
FEBRUARY 25, 2020 @ 10 AM

WE'RE ALL WONDERS BY R. J. PALACIO

READ BY CRYSTAL PHILLIPS

FOLLOWED WITH A CRAFT
& REFRESHMENTS



The Social Club

Laurel-Jones
County