

The Insider

July & Aug. 2019

Closings

July 4, 5, & 6 - Both LJCL & EPL will be closed in observance of Independence Day.

Thursday, July 18th : LJCL closed 8-5; EPL closed 2-6

Programs

Thursday, July 11th @ 3:30 p.m.—Book Signing

Tuesday, July 16th @10 a.m. - 100th Birthday Party

Thursday, July 18th @ 5 p.m. - 100th Celebration Block Party

Children's Programs

Laurel-Jones County
Library:
Tuesdays @ 10 a.m.

Ellisville Public Library:
Thursdays @ 10 a.m.

Laurel-Jones County Library System



07-18-19



Community Block Party
5:00 p.m. - 8:00 p.m.

You are cordially invited to join us for the grand celebration of the Centennial Anniversary of your hometown library system on July 18, 2019, from 5:00 p.m. until 8:00 p.m. We will be entertained by the nationally known husband/wife musical duo Double Dee. STEM Community Outreach will be on site with a slime and cotton candy booth! There will be food and beverage vendors, bounce houses, dry slides, a silent auction, library tours, and 50/50 raffle (one lucky winner will walk away with UP to \$12,500, depending on the number of tickets sold.) For further information, please see any library staff member! We are looking forward to celebrating this wonderful milestone with all of our friends and patrons!

Children's Department's



100th Birthday Party

ITS PARTY TIME AT THE LIBRARY! COME JOIN THE FUN.

Games!

WHEN: JULY 16, 2019 @ 10:00 A.M.
WHERE: LAUREL-JONES COUNTY LIBRARY

Story Time!

CHILDREN OF ALL AGES ARE WELCOME.

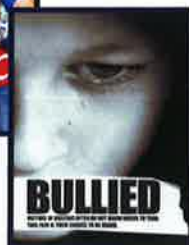
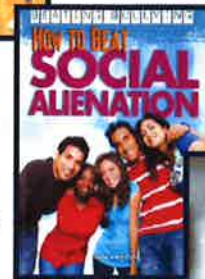
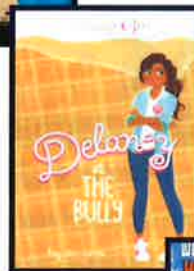
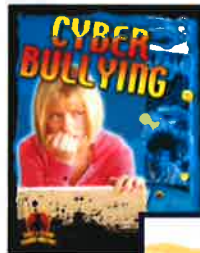
Refreshments!



Mia's Experience with Bullying

By: Dr. Sabrina Singleton

The Laurel-Jones County Library is pleased to announce a book signing event on Thursday, July 11th from 3:30-5:30. Dr. Sabrina Singleton, author of "Mia's Experience with Bullying" will hold a reading and chat about educating and supporting our youth on bullying. The public is welcome. Refreshments provided by Friends of Jones County Public Libraries.



Bullying can happen in any number of places, contexts, or locations.

To learn more about bullying visit your local library.

Be Kind, words don't rewind.



STORYTIME **JULY 2019**

Tuesday, July 9, @ 10:00 a.m.
Life on Mars—presented by staff (LJCL)

Thursday, July 11, @ 10:00 a.m.
How to Catch a Star - presented by staff (EPL)

Tuesday, July 16, @ 10:00 a.m.
Happy Birthday To You!—presented by staff (LJCL)
100TH BIRTHDAY CELEBRATION

Thursday, July 18, @ 10:00 a.m.
Papa Please Get the Moon For Me—presented by staff (EPL)

Tuesday, July 23, @ 10:00 a.m.
A Hundred Billion Trillion Stars —presented by staff (LCJL)

Thursday, July 25 @ 10:00 a.m.
Touch The Earth—presented by staff (EPL)

Tuesday, July 30 @ 10:00 a.m.
Three Little Aliens & the Big Bad Robot —presented by staff (LJCL)



We will take a short break from Storytime & Imagination Station in August and resume regular weekly program hours starting September 3rd.

BACK TO SCHOOL



WHO ARE THESE BOOK CHARACTERS?

Read a book with one of these characters during the month of August and we will give you a

♥ I LOVE MY LIBRARY ♥ bag containing a few extra school supplies.



Genealogy Vacation Trip Tips

Genealogical vacations combine family history with travel in a very unique way. Family history travel is more personal and can present unusual challenges as well as opportunities. Planning ahead is the best way to make sure your genealogy vacation is successful. It is easy to wander down a "rabbit trail" when searching for your ancestors so here is some tips from www.tripsavvy.com:

- Remember to bring addresses, opening days and times and contact information for every place you plan to visit.
- Leave extra room in your luggage to bring home books, copies and unexpected mementos.
- Family history libraries and research centers may charge admission; you will certainly need to pay for any copies you make. Bring small bills and change to pay for these services.
- Never, ever bring original family history documents on research trips. Make copies and bring them instead.
- Bring pencils, digital camera batteries, and extra memory sticks. A spiral notebook with folder pockets will help you keep trip-related notes and documents together.
- Consider bringing a laptop (if allowed at your research center) or tape recorder, to preserve your notes, thoughts and random ramblings.
- If you plan to visit outdoor locations, such as cemeteries, plan for bad weather. You have only one chance to get the information and photographs you want, so you will need sturdy shoes, insect repellent, an umbrella, sunscreen and a hat, at the very least.

For more travel tips visit www.tripsavvy.com; www.familytreemagazine.com; and www.smartertravel.com. For more information or help with your genealogy research, Susan Blakeney, genealogist with the Laurel-Jones County Library is always happy to assist you. Susan can be reached at (601)428-4313 ext. 111 or email geneal@laurel.lib.ms.us

Carolyn Russell, Assistant Director

Back-to-School Resources

Back-to-School doesn't have to equal back to worrying about your child's education. The Laurel-Jones County Library System offers a variety of resources to ensure that children can be academically successful no matter their age.

The two library locations offer a number of easy reader books and tactile learning toys to help beginning readers build a solid reading foundation. Educational DVDs from LeapFrog, Scholastic, and Preschool Prep that cover math, reading, colors, and shapes are also available at the Ellisville location.

Older students will find the free access to the MAGNOLIA online database and Microsoft Office products extremely helpful for reports. Also, Learning Express Library is an excellent tool to practice test for GED, ACT, and many more.

Did you know that you can search the libraries' collections for books on a specific AR level? You can even do this from the comfort of home from the library website. Once on the website, just go to the Resources tab, and under it, click "Online Catalog." Next, click "More Search Options." When the next window appears, click the box that says "Keyword," and you will see the option to search for library books on an AR level, among other things.

Use your local library for your most successful school year yet!

Joanna Ashley, ELL Branch Manager



Enhancing Patron Service with New Self-Checkout Technology

Although, Laurel-Jones County Library has been operating on limited funds for many years now due to poor economy, it continues to embrace new technology to enhance it's services to the citizens of Jones County. This year the library is celebrating 100 years of service and is excited to announce the installation of a Self-Service Check-out Station. The launch of this innovative circulation technology is expected to eliminate long lines and reduce wait time for patrons checking out library materials.

Try our new Self-Checkout on your next visit. It is easy, quick and convenient. The Self-Checkout station is located at the side of the circulation desk across from the audio books. If you have questions or need help, speak with any library staff member for assistance.

By: Carolyn Russell, Assistant Director

Laurel-Jones County Library System, Inc.

Laurel-Jones County Library (LJCL)
530 Commerce St.
Laurel, MS 39437
Ph: 601-428-4313
Fax: 601-428-0597

Genealogy Dept.
Thursday 1:00pm - 4:45pm
Friday 9:00am - 4:45pm (closed 12-1)
Saturday 10:00 am - 2:00 pm (closed
the 3rd Saturday of each month)

Ellisville Public Library (EPL)
201 Poplar St.
Ellisville, MS 39437
Ph: 601-477-9271
Fax: 601-477-3004

Call for hours of operation or visit
www.laurel.lib.ms.us



The Laurel -Jones County Library System has come a very long way since it's beginning in the year of 1919. When the library system was first introduced in Jones County, it was located in Laurel City Hall and referred to as the Laurel Library Association. In order to obtain a membership, one had to purchase it. In 1923, the library relocated to Lauren Rogers Museum. The library became a free library in 1966 and no longer required patrons to purchase subscriptions. We moved to our current location in 1979.

The library system has made great strides in the past 100 years. No longer are we just a place to go check out your favorite classic novel or read the local newspaper. While we still offer both of those options, we have expanded our services to cover so much more. We have multiple collections for your reading enjoyment, research, family history, etc. The library carries a wide variety of DVDs and audio books, as well as video games. Both our main location and our Ellisville branch are equipped with multiple Public Access Computers and free WiFi. Each location has weekly children's programming , early learning computer stations that address all seven subject areas, and free literacy tutoring for school age children. We are also one of the first library systems in the state to address the need for adult literacy programming. We have multiple seats available for one-on-one literacy tutoring with a world renowned computer program to reinforce the skills taught.

The above mentioned are just a mere sprinkling of all of the free services that YOUR library has to offer! Stop by today and see any manager or staff member for more information! And, as always, thank you for your patronage and support!